



PRINTMACHINE OFFICE PLUS MAXIMIZE YOUR DOCUMENT OUTPUT AND MAILING PREPARATION PROCESS

WE VALUE YOUR MAIL



PRINTMACHINE OFFICE PLUS

ENHANCE MAIL PREPARATION – REALIZE POSTAL SAVINGS

PrintMachine Office Plus solution is an easy to use software package, which brings your document output management process and folder inserter system to the next level of automation and savings while maximizing the effectiveness of your business critical communications.

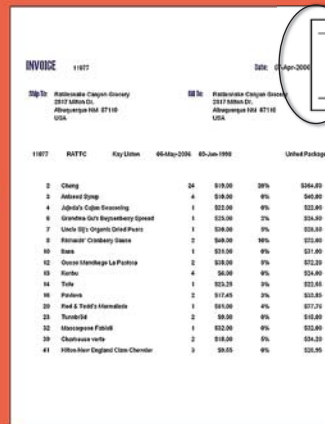
The advanced capabilities of PrintMachine Office Plus allow customers with existing Neopost folder inserter systems to optimize the value of their mailroom equipment by delivering significant postage savings, enhanced security of critical customer business documents, and increased mailroom efficiency.

OPTIMIZE ADDRESS



INVOICE	11077	DATE:	07-Apr-2006		
Ship To:	Pathstone Cayman Group 2017 Village Dr. Abingdon MA 07110 USA	Bill To:	Pathstone Cayman Group 2017 Village Dr. Abingdon MA 07110 USA		
INVT	RAITC	Qty/Unit	66-May-2006	05-Jun-2006	United Postage
2	Chang	24	\$18.00	20%	\$324.00
3	Advised Symp	4	\$16.00	0%	\$64.00
4	J&M's Copy Processing	1	\$22.00	0%	\$22.00
6	Quinn's Copy Reproduction Special	1	\$25.00	2%	\$25.00
7	Unicopy's Originals/Color Print	1	\$30.00	0%	\$30.00
8	Motors' Creditary Sales	2	\$40.00	10%	\$72.00
10	Star	1	\$21.00	0%	\$21.00
12	Onyx Imaging La Postica	2	\$36.00	0%	\$72.00
13	Karbo	4	\$6.00	0%	\$24.00
14	Telo	1	\$23.25	0%	\$23.25
16	Parsons	2	\$17.40	0%	\$34.80
20	Rod & Todd's Memorials	1	\$17.76	0%	\$17.76
23	Turnstile	2	\$9.00	0%	\$18.00
32	Morgan's Fulfill	1	\$22.00	0%	\$22.00
38	Chubbuck velle	2	\$14.20	0%	\$28.40
41	Hilton-Hen England Class Charter	3	\$9.65	0%	\$28.95

ENHANCE SECURITY



INVOICE	11077	DATE:	07-Apr-2006		
Ship To:	Pathstone Cayman Group 2017 Village Dr. Abingdon MA 07110 USA	Bill To:	Pathstone Cayman Group 2017 Village Dr. Abingdon MA 07110 USA		
INVT	RAITC	Qty/Unit	66-May-2006	05-Jun-2006	United Postage
2	Chang	24	\$18.00	20%	\$324.00
3	Advised Symp	4	\$16.00	0%	\$64.00
4	J&M's Copy Processing	1	\$22.00	0%	\$22.00
6	Quinn's Copy Reproduction Special	1	\$25.00	2%	\$25.00
7	Unicopy's Originals/Color Print	1	\$30.00	0%	\$30.00
8	Motors' Creditary Sales	2	\$40.00	10%	\$72.00
10	Star	1	\$21.00	0%	\$21.00
12	Onyx Imaging La Postica	2	\$36.00	0%	\$72.00
13	Karbo	4	\$6.00	0%	\$24.00
14	Telo	1	\$23.25	0%	\$23.25
16	Parsons	2	\$17.40	0%	\$34.80
20	Rod & Todd's Memorials	1	\$17.76	0%	\$17.76
23	Turnstile	2	\$9.00	0%	\$18.00
32	Morgan's Fulfill	1	\$22.00	0%	\$22.00
38	Chubbuck velle	2	\$14.20	0%	\$28.40
41	Hilton-Hen England Class Charter	3	\$9.65	0%	\$28.95

MAXIMIZE EFFECTIVENESS



INVOICE	11077	DATE:	07-Apr-2006		
Ship To:	Pathstone Cayman Group 2017 Village Dr. Abingdon MA 07110 USA	Bill To:	Pathstone Cayman Group 2017 Village Dr. Abingdon MA 07110 USA		
INVT	RAITC	Qty/Unit	66-May-2006	05-Jun-2006	United Postage
2	Chang	24	\$18.00	20%	\$324.00
3	Advised Symp	4	\$16.00	0%	\$64.00
4	J&M's Copy Processing	1	\$22.00	0%	\$22.00
6	Quinn's Copy Reproduction Special	1	\$25.00	2%	\$25.00
7	Unicopy's Originals/Color Print	1	\$30.00	0%	\$30.00
8	Motors' Creditary Sales	2	\$40.00	10%	\$72.00
10	Star	1	\$21.00	0%	\$21.00
12	Onyx Imaging La Postica	2	\$36.00	0%	\$72.00
13	Karbo	4	\$6.00	0%	\$24.00
14	Telo	1	\$23.25	0%	\$23.25
16	Parsons	2	\$17.40	0%	\$34.80
20	Rod & Todd's Memorials	1	\$17.76	0%	\$17.76
23	Turnstile	2	\$9.00	0%	\$18.00
32	Morgan's Fulfill	1	\$22.00	0%	\$22.00
38	Chubbuck velle	2	\$14.20	0%	\$28.40
41	Hilton-Hen England Class Charter	3	\$9.65	0%	\$28.95

OPTIMIZE ADDRESS



PrintMachine Office Plus integrates with CASS™, PAVE™ certified address management software, providing address correction and optimization to take advantage of significant postal savings. The result? You qualify for up to 25% savings with USPS postal discount rates and undeliverable mail is reduced.

ENHANCE SECURITY

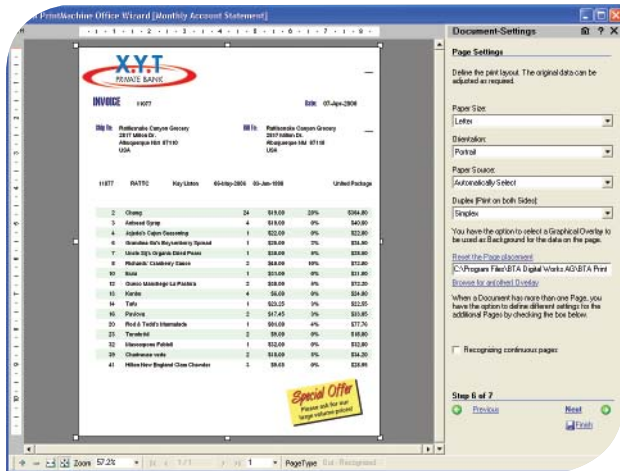


PrintMachine Office Plus adds Optical Mark Recognition (OMR) marks to preformatted documents, allowing folder inserter systems to eliminate common errors and intelligently ensure document integrity.

MAXIMIZE EFFECTIVENESS



Adding electronic overlays with PrintMachine Office Plus increases the ability to personalize customer communications, while eliminating the cost of printing and storing pre-printed forms.



PrintMachine Office Plus features a simple wizard-based interface.

SIGNIFICANTLY SAVE ON MAILING COSTS

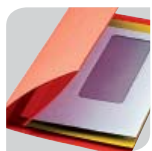
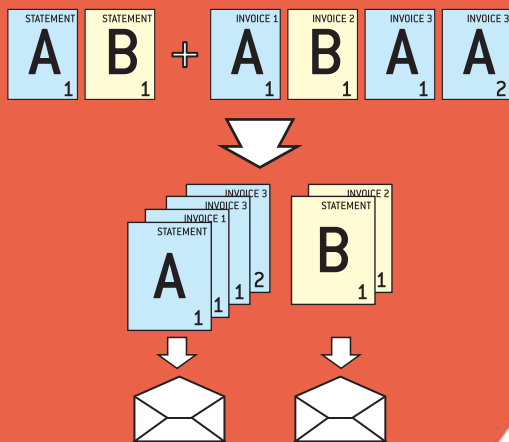
ENHANCE SECURITY & INTEGRITY OF BUSINESS CRITICAL DOCUMENTS

IMPROVE OPERATIONAL EFFICIENCY

INCREASE DOCUMENT PROCESSING PRODUCTIVITY

MODULAR SOLUTION THAT GROWS WITH YOUR BUSINESS NEEDS

GROUP & SORT DOCUMENTS



GROUP & SORT DOCUMENTS

PrintMachine Office Plus will optimize mailings by grouping independent documents destined for the same address in the same envelope. Rather than send multiple items to the same recipient, PrintMachine Office Plus allows you to send them all at once, reducing the postage and materials cost for that mail item.



IMPROVE EFFICIENCY

PrintMachine Office Plus provides extreme ease-of-use with a wizard-based user interface that supports day-to-day operation. An intuitive print dashboard interface also offers instant feedback about the status of the various print jobs. With the help of the wizard, operators can easily define new document configurations and run them.



SIMPLE INTEGRATION

Powerful and modular, PrintMachine Office Plus software is easily installed and implemented into current document processing environments. The most commonly used preformatted print data types are supported. Therefore, your current print file creation process or IT operations will feel little to no impact with the addition of PrintMachine Office Plus.

MODULES

POSTAL AUTOMATION

- Interface PrintMachine with address management software.
- Increase address quality by verifying and standardizing (CASS™, PAVE™) address data and reduce undeliverable mail, wasted postage and printed material costs
- Barcode address printing enhances deliverability and eliminates cost of duplicates
- Optimize address data with ZIP+4 and other data to qualify for lower postage rates
- Minimize address correction fees charged by shippers

OMR

- Easily add OMR marks to preformatted documents
- Run variable page document jobs – Eliminate manual sorting tasks
- Sequence checking maintains document integrity and page order
- Activates feed stations for selectively inserting BREs and marketing materials

GROUPING & SORTING

- Group documents by recipient, address or both in the same envelope
- Sort document order to maximize appeal

WHY CHOOSE NEOPOST

Neopost is a leading worldwide provider of mailing and logistics solutions. Our innovative products and services bring simplicity and efficiency to your complete mailing process to make your business run more effectively.

REQUIREMENTS

PC Hardware

- Pentium 2 GHz PC with 512 MB RAM or higher
- 10 gigabytes free hard disk space
- CD-ROM
- Windows platform 2000 or higher

Software

- Works with any printer with Windows drivers (one printer only)
- Preformatted print data – choice of Lineprinter, PDF, PCL or Windows formats (select one)

AVAILABLE ENHANCEMENTS WITH OTHER NEOPOST PRINT MACHINE VERSIONS

ENHANCED EFFICIENCY AND SAVINGS

- Higher and unlimited print speeds
- Ability to control multiple printers

IMPROVED DOCUMENT PROCESS

- Add 1 and 2 D bar codes to documents
- Conditional Composition of Documents and Enhancements
- XML, Flat file, SAP-RDI, CSV data input
- Bit map data input
- Selectively add marketing messages to documents based on your predefined rules
- Add charts dynamically based on document data
- Neopost Mail Piece Production Control Solution for proof of mailing reporting

IMPROVED OPERATIONAL EFFICIENCY

- Automatic conversion from one input format to a different output format
- Work with more than one type of data simultaneously
- Alternate communication forms like fax, e-mail and web presentment, in addition to or instead of print
- Output to an archive system
- Automatic scheduling of printing start time
- Automated if/then rules to eliminate manual pre and post processing